

## Trusted Site Setting for Internet Explorer

To ensure the Core-CT / PeopleSoft active content, AJAX applications and scripts execute correctly the following setting is required for the Internet Explore browser.

The following site entries or the **\*.ct.gov** entry must be added to the trusted sites.

corect.ct.gov, corehr.ct.gov, corefn.ct.gov, coreep.ct.gov, corecr.ct.gov

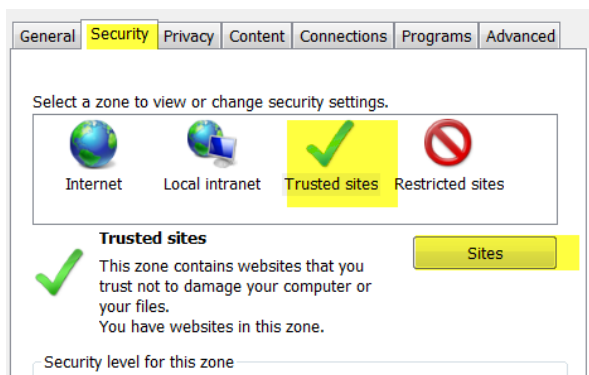
Click the “Tools” Menu option

Click “Internet Options”

Click the “Security” Tab

Click on “Trusted Sites”

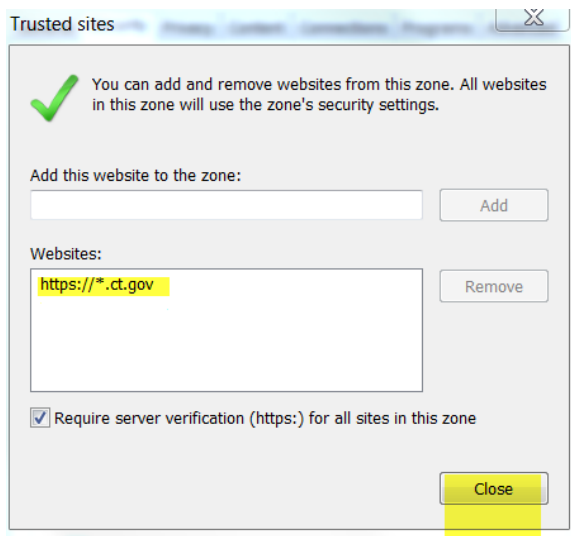
Click the “Sites” Button



Add:

[https://\\*.ct.gov](https://*.ct.gov)

to the Websites list



Click the “Close” button, Click the “OK” Button

Exit and restart the browser session.